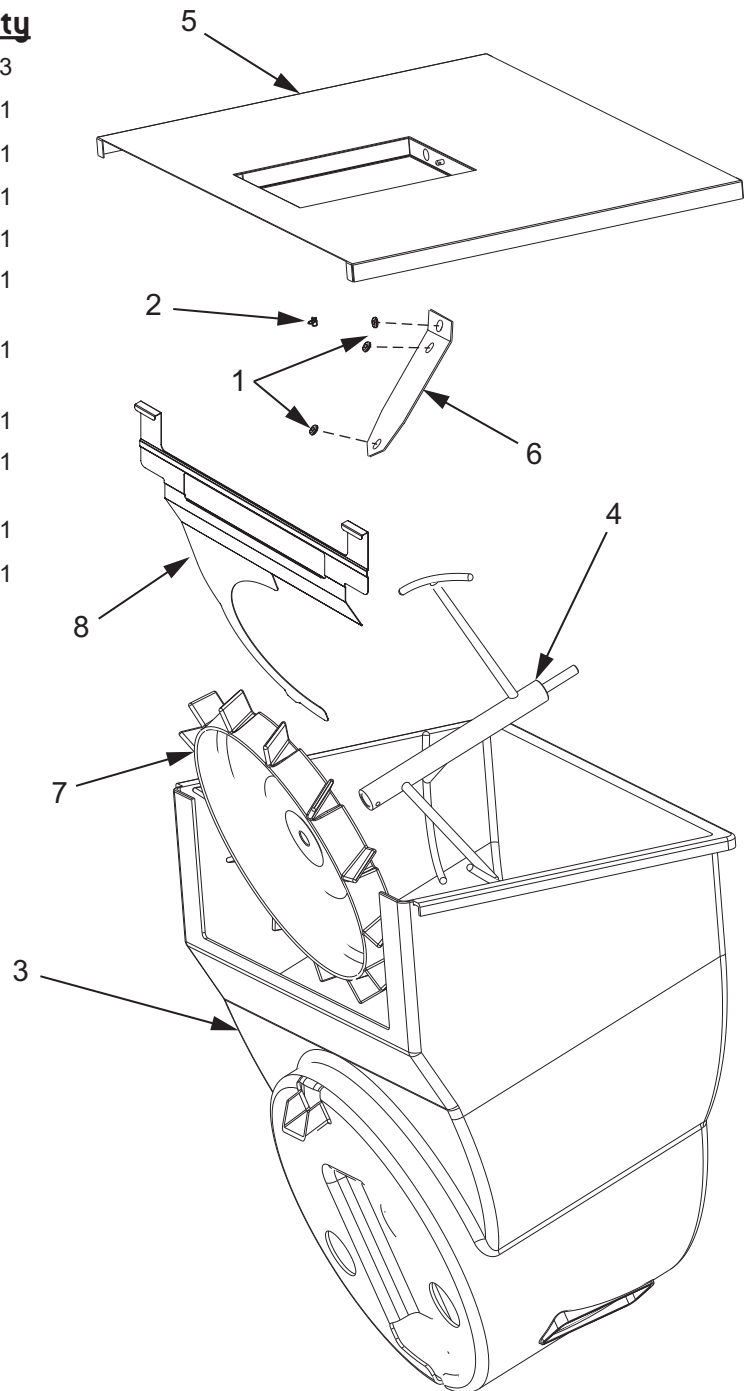


The following illustrates how to convert Flavor Select units manufactured after April 18, 2005 from cubed ice to pellet ice dispensers.

Kit Contents [82-3633]

<u>Item</u>	<u>Part Number</u>	<u>Description</u>	<u>Qty</u>
1	02-0577	Rubber Grommet, G3002	3
2	03-0368	Retainer Pin, Agitator	1
3	05-2993/02	Ice Shroud, Bin Liner, 30"	1
-	05-2325/01	Ice Shroud, Bin Liner, 22"	1
4	23-1401	Helical Agitator Assembly	1
5	42-0109	Scotsman/Hoshizaki Pellet Ice Adapter Plate, 30"	1
-	42-0111	Scotsman/Hoshizaki Pellet Ice Adapter Plate, 22"	1
6	30-9446	Mechanical Bin-Stat Adapter	1
7	82-3651	Dispensing Wheel Assembly, Pellet Ice	1
8	30-9880	Pellet Ice Shield, 30"	1
-	30-9801/01	Pellet Ice Shield, 22"	1



Setup Installation

⚠ WARNING

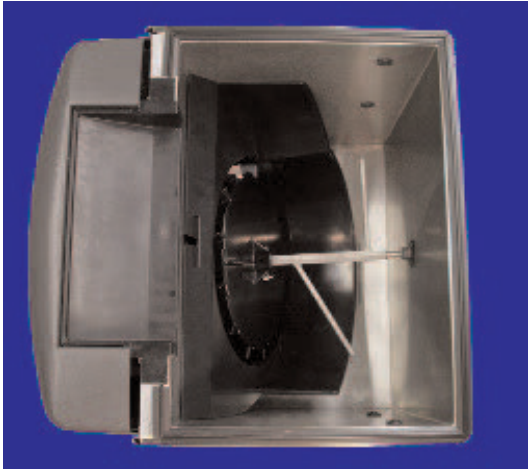
Before beginning installation, disconnect electrical power to dispenser as well as water and drain lines to the icemaker.

1. Disconnect power to the dispenser.
2. Remove merchandiser by lifting and pulling back:
3. Remove icemaker, adapter plate (if applicable), and bin stat from top of the dispenser.

NOTE

See icemaker manufacturer instructions for icemaker removal.

4. Remove ice from ice bin.



5. Remove the agitator pin clip and pin.



6. Remove the cube agitator bar. Push the agitator towards the rear of machine to disengage it from the wheel. Pull the agitator to the side to clear the wheel hub.



7. Pull the agitator towards the front of the machine to disengage from the back bearing. Remove the cube dispensing wheel.



8. Remove the ice shroud and gasket.



Pellet Kit Installation

1. Insert ice shroud into ice bin.



2. Seat ice shroud into ice bin.



3. Push the ice shroud back towards rear wall so that the ice chute clears the top wall of the ice bin. Push the ice shroud into the ice bin.

⚠ ATTENTION

Ensure that the ice chute fits into the ice chute opening in the ice bin.



4. Install the pellet dispensing wheel.



⚠ ATTENTION

Ensure that the pin holes are aligned when installing the dispensing wheel.

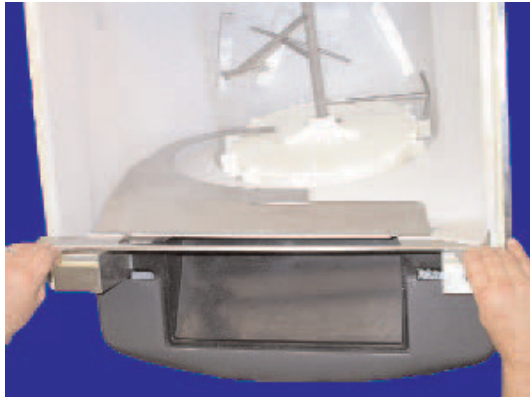
5. Install the pellet agitator assembly:
 - Insert the end of the agitator into the bearing on the back wall.
 - Push agitator towards rear to allow clearance between the agitator and wheel hub.
 - Align agitator pin hole with wheel pin hole.
 - Fit agitator to the wheel hub.



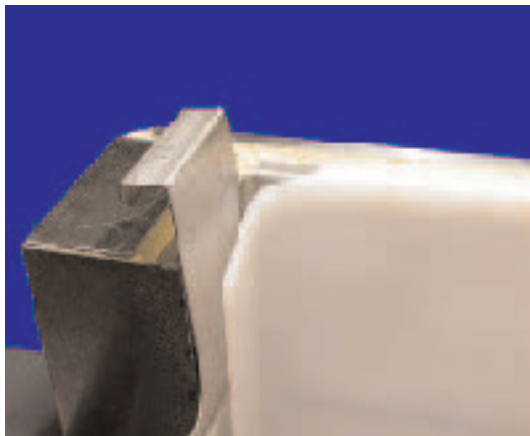
6. Reinstall agitator pin.



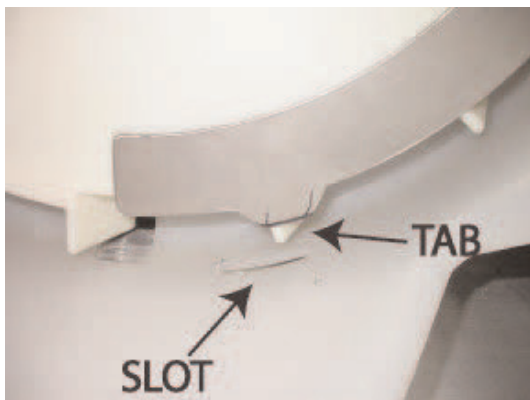
7. Reinstall agitator clip and lock.
8. Install the shield. Hold the shield so that the hooks are facing the front of the machine.



9. Slide the shield into the ice shroud ensuring the shield is captured between the ice shroud and the ice bin at the top left and right corners.



10. Ensure the tab at the bottom of the shield aligns with the slot at the bottom of the ice shroud.



11. Ensure the tab is fully seated into the slot.



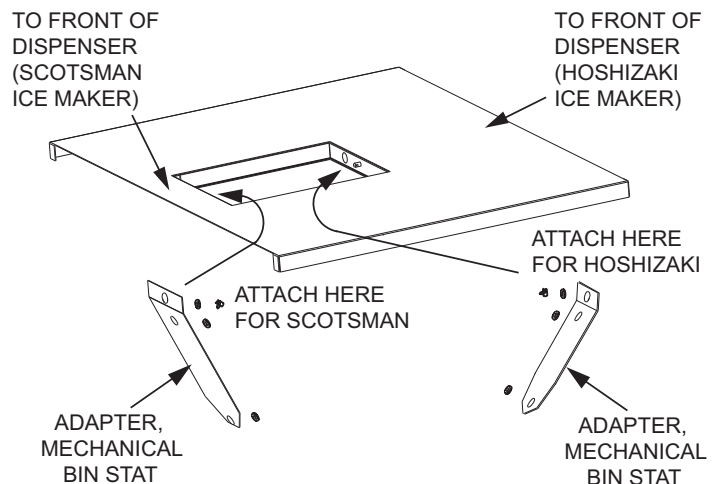
12. Reinstall gasket.



13. Install the adapter plate to support the icemaker.

NOTE

Use the adapter plate with either a Scotsman or Hoshizaki pellet ice machine. Orient the adapter plate according to which ice dispenser is being used.



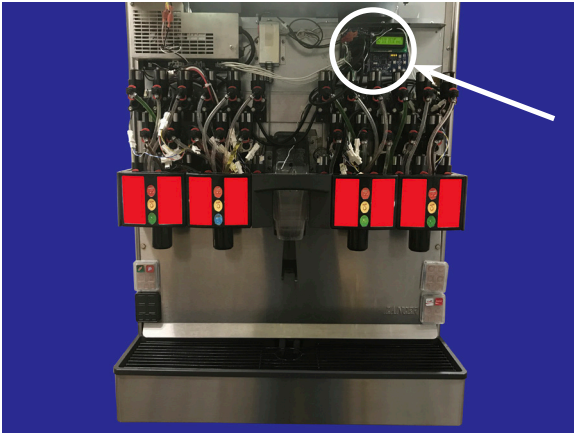
14. (If necessary) Install the mechanical bin stat adapter according to which ice maker is being used (see above).
15. Reinstall bin stat and install icemaker according to manufacturers' instructions.

Ice Type Settings & Agitation Times - FS

NOTE

The following highlights the necessary steps to change the ice type settings and agitation times on the FS.

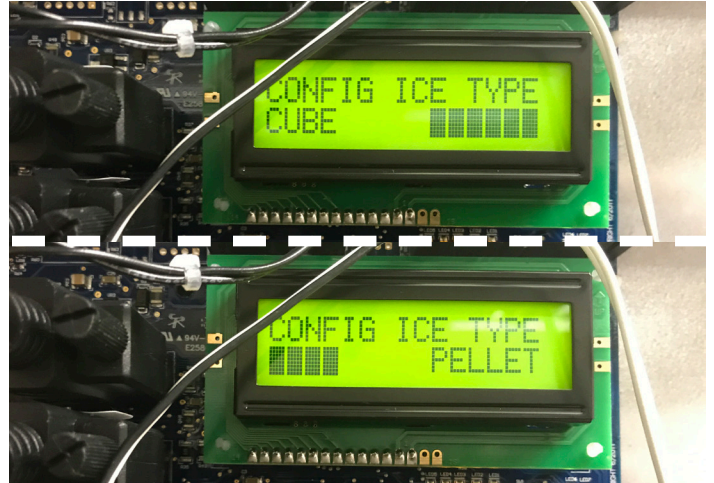
1. Plug in the unit to grounded electrical outlet.
2. Once the unit is powered on, access the FS valve board.



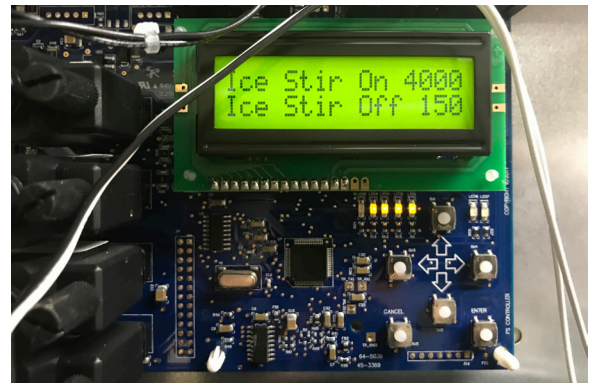
3. Use the arrows on the valve board to navigate to the "CONFIG ICE TYPE" menu and press Enter.



4. Use the right arrow to change the ice type setting from "CUBE" to "PELLET" and press Enter.



5. Use the arrows to navigate to the "VW ICE STIR TMS" menu and press Enter.
6. Verify that the Ice Stir On setting is "4000" and the Ice Stir Off setting is "150".



7. Reinstall the merchandiser.

Lancer Corp., 6655 Lancer Blvd., San Antonio, Texas 78219 - 800-729-1500 - Technical Support/Warranty:
800-729-1550 custserv@lancerworldwide.com - lancerworldwide.com - Manual PN: 28-0700 rev:03-1, 8/2/2021
"Lancer" and "Lancer Worldwide" are the registered trademarks of Lancer © 2021 by Lancer, all rights reserved.